

Effortless
Collection

PANEL | ACOUSTIC

PANEL | ACOUSTIC

Effortless Collection

Framework 2762



Grotto
2829



Beige
2687



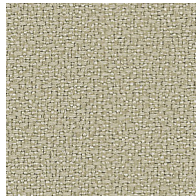
Cappuccino
2832



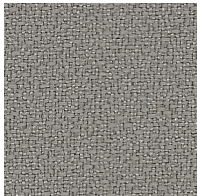
Stone
2688



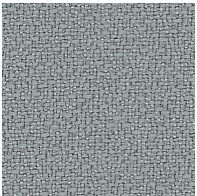
Espresso
2833



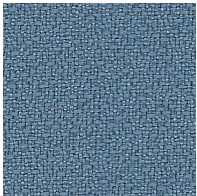
Sandy Pebble
2554



Dove Gray
2689



Gray Blue
2553



Blue Smooth
2519



Elephant
2690

Sprite 2671



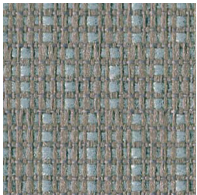
Snow
7040



Linen
7010



Powder
7011

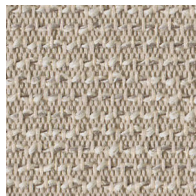


Sky
7033

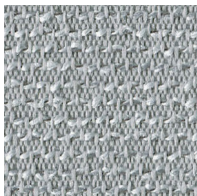


Khaki
7030

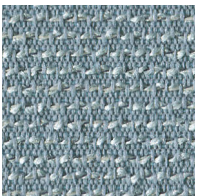
Strata 2968



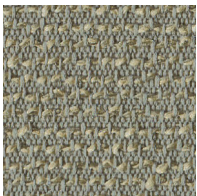
Sand
030



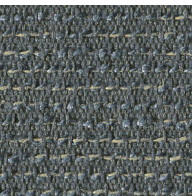
Cloud
040



Sky
050



Cement
060

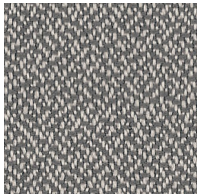


Sea
070

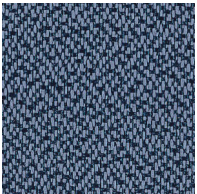
Broadcast 2758



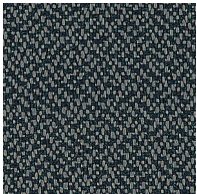
Serengeti
1196



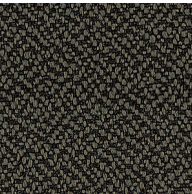
Shade
2372



Chicory
1205



Graphite
2375



Mink
2686

Specifications

Pattern	Content	Width	Repeat	Backing	Treatment	NRC of fabric in front of anechoic termination
Framework 2762	100% polyester	66" min. useable	none	none	none	.90
Sprite 2671	95% pre-consumer recycled polyester 5% post-consumer recycled polyester	66" min. useable	.83" vertical, .26" horizontal	none	polyester binder	.95
Strata 2968	100% pre-consumer recycled polyester	66" min. useable	.1" vertical, none horizontal	none	none	.95
Broadcast 2758	100% polyester	66" min. useable	none	none	none	.95

Cleaning Code

Standard Care Label W-S. Clean with water based cleaning agents, foam or pure, water free solvents. Vacuuming or light brushing is recommended to prevent dust and soil buildup.

Performance



All patterns meet or exceed ACT performance guidelines.

Flammability

ASTM E84
Class 1 or A

Acoustical Performance

NRC of anechoic termination
NRC of fabric in front of anechoic termination.
Please refer to chart above.

1.00

Sustainability

Sprite and Strata are 100% recycled and recyclable
Terratex is a registered trademark of Duvaltex

Sprite & Strata

Miscellaneous

Proudly woven in North America supporting our local communities.

Application testing of this product is recommended.
Colors may vary between dye lots. These are directional fabrics.

Visit guilfordofmaine.com for samples.

This pattern is included in the underwriters laboratory panel fabric recognition program. Additional testing of this U.L. recognized component fabric is not required on approved panels from participating manufacturers.

*Certification Marks owned by the Association for Contract Textiles, Inc.